



Kathryn A. Toomey
Register of Deeds

A note from the Register



Spring is here. Days are longer and the weather is slowly becoming a little bit warmer. We have made a decision to publish our newsletter quarterly this year. We are expanding our effort to be more earth friendly and fiscally responsible, by using less paper and expending less postage.

We are excited to announce that we are expanding our community outreach. We are scheduling events in local libraries to share the services we offer to all land and homeowners.



Worcester Registry of Deeds

Quarterly Newsletter

March 2025 ~ Issue #39

Airports & Airfields in Worcester Country

In the 1920s, the Whittall brothers of central Massachusetts, were flying their planes over fields and villages of Worcester County. All the local pilots, faced a problem: no airport in Worcester. Recreational flyers were forced to use farm fields but they were a bumpy alternative. Additionally, commercial passenger planes and mail carriers needed improved runways which were only available at real airports.

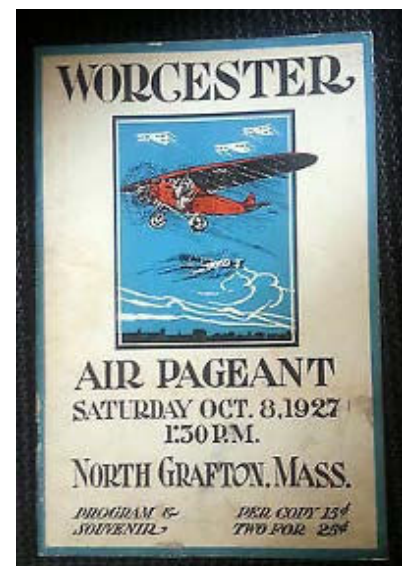
In 1925 a group of Worcester businessmen and flying enthusiasts began to look for potential sites for an airport in Worcester County. But the plans stalled so Whittall used his own money to hire engineers to survey possible sites. Inches Farm field in North Grafton was at the top of the list. Whittall was going to purchase the land, but then received enough excitement and support from the Worcester businessmen. Within three weeks, the group had the funds to incorporate, and by October 3, 1927, two runways and two hangers were open for business. Whittall Field in North Grafton became Worcester's first airport.

A week later, more than 30,000 people came to the official dedication. There were stunt flyers, parachutists, and

military pilots to entertain the crowd. This was the only airport Worcester was to have for the next 19 years.

World War II brought major changes in aircraft design so the smaller field airports would be too small for the larger modern aircraft.

(Continued on page 2)



Airplanes that flew at Whittall Field 1920's

In 1944 ground was broken for the new airport closer to downtown Worcester. On May 4, 1946 the new Worcester Airport was dedicated near the city's west side. Commercial service to New York City began a week later. Approximately 5 years later the old Whittall Field in North Grafton was sold for a housing development.

Worcester Regional Airport sits on a 1,000 acre lot off Pleasant St. and Goddard Memorial Dr. mostly situated in Worcester and partially in Leicester.



Gardner Municipal Airport

Officially dedicated on November 17, 1928. The plot chosen was the plains district in the southeast part of Templeton near the Gardner line on the former Brochu Farm.

Hopedale Airport

Hopedale Industrial Park Airport, is open to the public. It has one runway and sees very low traffic. Approximately sixteen aircraft are based at Hopedale. At one point, it housed a flight school and offered plane rentals.

Southbridge Municipal Airport

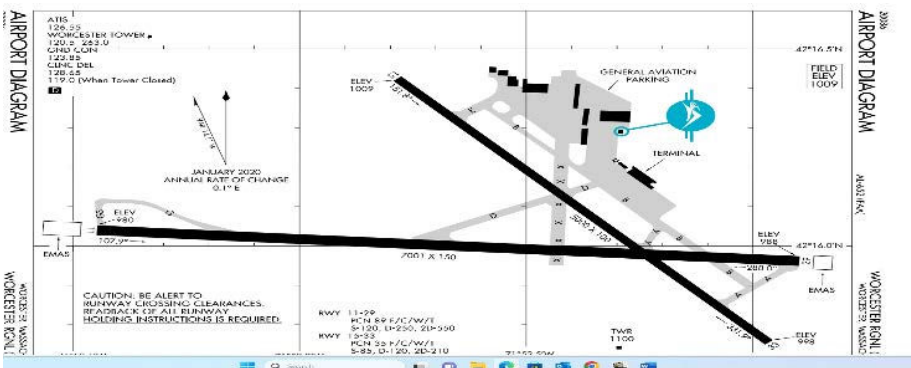
The airport has a 3,500-foot runway, used by planes with up to eight passengers, and offers refueling services from an above-ground 8,000-gallon tank, as well as hangar space. The on-site diner at the Southbridge Municipal Airport, which was once known as The Red Baron Diner, is now called Josh's Place.

Tanner-Hiller Airport

Located in Barre, Massachusetts, is a public airport owned by the G&C Group of Acton, MA, who purchased the field from the Leonard A. Tanner Estate in May 2017. It has one runway, averages 30 flights per week, and has approximately 25 aircraft and hang gliders based on the field.

Spencer Airport

A public airport which was once owned by Gregg E. Andrews. It has one runway, averages 125 flights per week, and has approximately 26 aircraft based on its field. Andrews Aviation, based at the airport, provides flight instruction in a vintage Piper J-3 Cub.



Shrimp and Rice Recipe

Ingredients

Jasmine rice	Lemon (zest and juice)
Butter	Salt and pepper
Yellow onion	Medium shrimp
Garlic	Parmesan
Low-sodium chicken broth	Fresh parsley



Directions

1. Place rice in a fine sieve. Rinse under cold water until water is nearly clear, about 1 minute. Drain well then set aside.
2. Melt 1 Tbsp butter in a pot over medium heat. Add onion and saute 4 minutes.
3. Add garlic and saute 30 seconds longer.
4. Pour in chicken broth, lemon zest and season with salt and pepper to taste. Bring to a boil, then pour in rice and give it a quick stir.
5. Cover and reduce heat to low. Let simmer 13 minutes (meanwhile peel the shrimp to make the most of the time).
6. After 13 minutes quickly add the shrimp to the rice in an even layer, drizzle with lemon juice, dot with remaining 4 Tbsp butter. Cover and continue to cook 2 to 3 minutes longer until shrimp are about halfway cooked.
7. Remove from heat. Toss in parmesan and parsley. Let rest for a few minutes, covered until shrimp are fully cooked through from the residual heat.

How to save money at the grocery store.

- Plan your meals so you only buy what you need.
- Check to see what you have at home so you don't buy the same item again if you already have it.
- Shop with a list and stick to it, that is the hard part.
- Join loyalty programs especially if you shop at the same store most of the time.
- Buying generic store brands can save you money.
- Don't go shopping when you're hungry. That is when the impulse buying takes over.

Sterling Airport

The airport opened to the public in December 1948. The airport hosts activities, including flying planes, gliders, and hot air balloon rides.

Bolton Airport

Was an airfield operational in the mid-20th century (1930-1951) in Clinton, Massachusetts.

Mendon Airport

Was an airfield operational in the mid-20th century (1927-1955) in Mendon, Massachusetts. The airfield was located in the center of Mendon.

Westboro Airport

Was a public airfield operational in the mid-20th century (1934-1977).

Pine Hill Airport

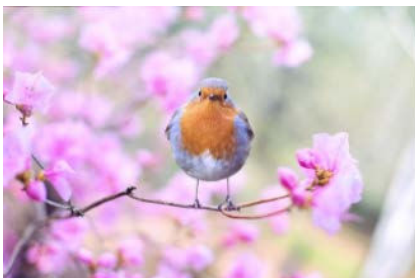
Was a private airfield operational in the mid-20th century (1950-1960) in Lancaster, Massachusetts.

Oxford Airport

Was an airfield operational from 1966 to before 2005, sometimes public and other times private.

Leicester Airport

Was an airfield operational in the mid-20th century (1937-1970). It was located adjacent and to the west of the Worcester Regional Airport.



Offsite Events

Check our website for more events

April 1, 2025 5:30 – 6:30pm

Beaman Public Library

8 Newton St.,

West Boylston, MA 01583

Come meet with Attorney Katie Toomey, Register. Learn about the importance of protecting your home and planning for the future.

April 22, 2025 2:00 – 5:00pm

Health Fair

Shrewsbury Senior Center

98 Maple Ave.,

Shrewsbury, MA 01545

April 24, 2025 5:00 – 7:00pm

Gardner City Hall

95 Pleasant Street

Gardner, MA 01440

Greater Gardner Health

& Wellness Fair

May 15, 2025 10:00am – 12:00pm

Casaubon Senior Center

153 Chestnut Street

Southbridge, MA 01550

Health & Wellness Fair

May 30, 2025 10:00am – 12:00pm

Gardner Senior Center

294 Pleasant Street

Gardner, Ma 01440

Office Hours with Attorney Katie Toomey, Register of Deeds

June 11, 2025 2:00pm – 3:00pm

Gardner Senior Center

294 Pleasant Street

Gardner, Ma 01440

With the Golden Age Club Presentation



**Stop
Deed Fraud**

**Be
Cautious**

**Enroll in CNS
(Consumer Notification
Service)**

Free to Enroll



Kathryn A. Toomey

Register of Deeds, Worcester District

90 Front Street, Suite C-201

Worcester, MA 01608

Telephone: (508) 368-7000

Email: Worcester.Deeds@sec.state.ma.us