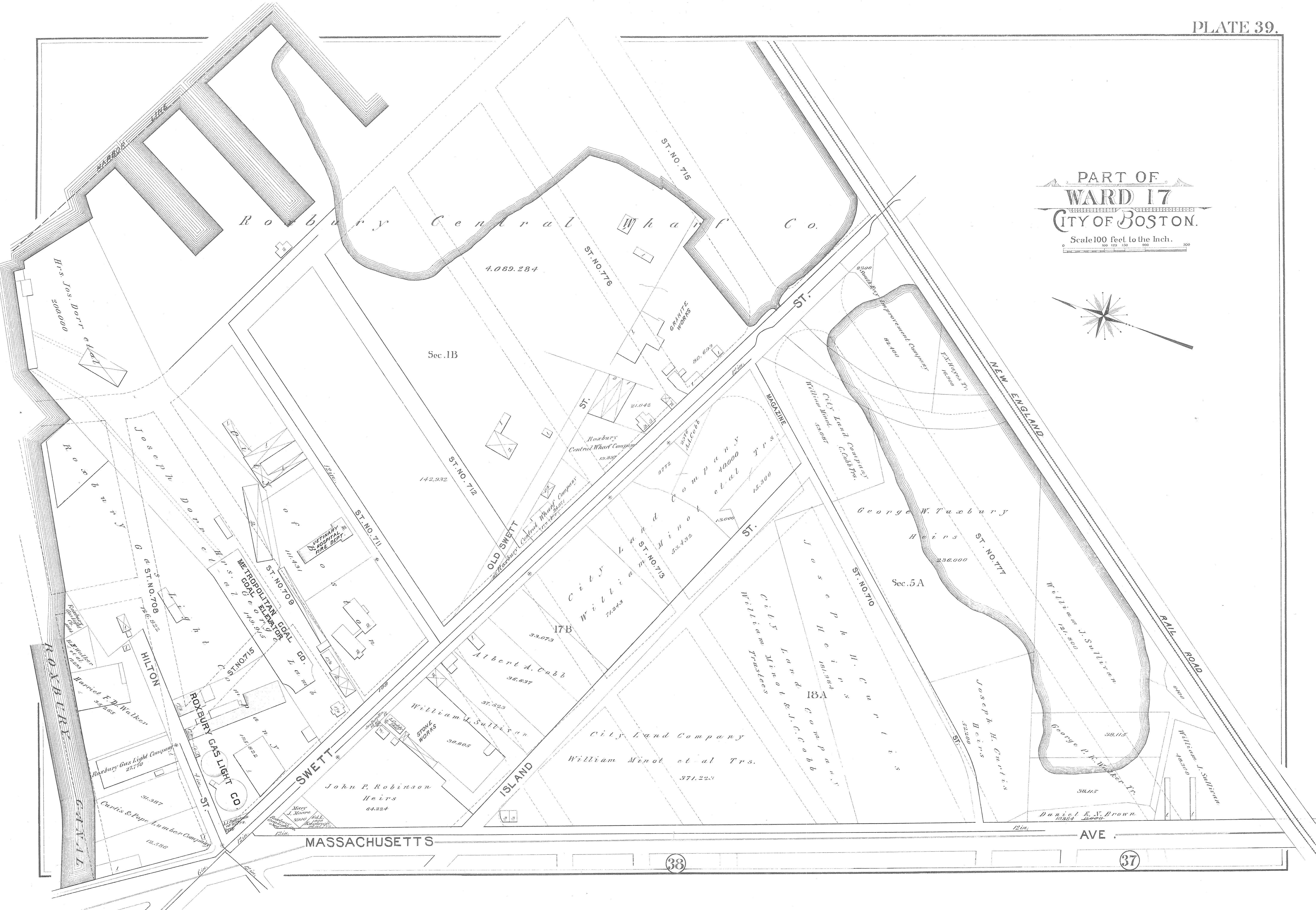
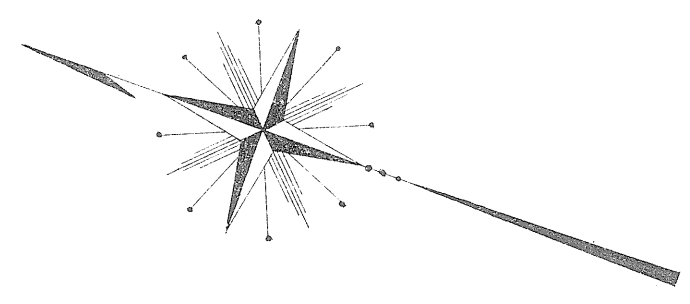


PART OF  
WARD 17  
CITY OF BOSTON.

Scale 100 feet to the Inch.



Roxbury Central Wharf Co.

4,089,284

Sec. 1B

142,932

ST. NO. 712

OLD SWETT

Roxbury Central Wharf Company

19,307

ST. NO. 713

City Land Company

17B

Albert A. Cobb

37,523

William J. Sullivan

30,605

John P. Robinson Heirs

64,224

MASSACHUSETTS

38

AVE.

37

Hrs. Jos. Dorr et al

Roxbury

ROXBURY

GANILE

Joseph Dorr et al

ST. NO. 709

HILTON

ROXBURY GAS LIGHT CO

ST.

METROPOLITAN EDIL ELEVATOR CO

ST. NO. 716

ROXBURY GAS LIGHT CO

ST.

ST. NO. 711

ST. NO. 709

ST.

ST. NO. 712

ST. NO. 711

ST. NO. 709

ST. NO. 716

ST.

ST. NO. 716

ST. NO. 712

ST. NO. 711

ST. NO. 709

ST. NO. 716

ST. NO. 711

ST. NO. 709

ST. NO. 716

ST. NO. 712

ST. NO. 711

ST. NO. 709

ST. NO. 716

ST. NO. 711

ST. NO. 709

ST. NO. 716

ST.

ST.

MAGAZINE

ST.

ST. NO. 710

ST.

George W. Taxbury Heirs

236,000

ST. NO. 717

ST. NO. 710

ST.

Joseph H. Curtis Heirs

32,300

ST.

George P. A. Walker Jr.

38,115

ST.

William J. Sullivan

14,350

ST.

Daniel E. N. Brown

12,884

ST.

City Land Company

53,987

ST. NO. 716

ST. NO. 712

ST. NO. 711

ST. NO. 709

ST. NO. 716

ST. NO. 711

ST. NO. 709

ST. NO. 716

ST. NO. 711

ST. NO. 709

ST.

City Land Company

40,000

ST. NO. 716

ST. NO. 712

ST. NO. 711

ST. NO. 709

ST. NO. 716

ST. NO. 711

ST. NO. 709

ST. NO. 716

ST. NO. 711

ST. NO. 709

ST.

City Land Company

15,300

ST. NO. 716

ST. NO. 712

ST. NO. 711

ST. NO. 709

ST. NO. 716

ST. NO. 711

ST. NO. 709

ST. NO. 716

ST. NO. 711

ST. NO. 709

ST.

City Land Company

15,300

ST. NO. 716

ST. NO. 712

ST. NO. 711

ST. NO. 709

ST. NO. 716

ST. NO. 711

ST. NO. 709

ST. NO. 716

ST. NO. 711

ST. NO. 709

ST.

City Land Company

15,300

ST. NO. 716

ST. NO. 712

ST. NO. 711

ST. NO. 709

ST. NO. 716

ST. NO. 711

ST. NO. 709

ST. NO. 716

ST. NO. 711

ST. NO. 709

ST.

City Land Company

15,300

ST. NO. 716

ST. NO. 712

ST. NO. 711

ST. NO. 709

ST. NO. 716

ST. NO. 711

ST. NO. 709

ST. NO. 716

ST. NO. 711

ST. NO. 709

ST.

City Land Company

15,300

ST. NO. 716

ST. NO. 712

ST. NO. 711

ST. NO. 709

ST. NO. 716

ST. NO. 711

ST. NO. 709

ST. NO. 716

ST. NO. 711

ST. NO. 709

ST.

City Land Company

15,300

ST. NO. 716

ST. NO. 712

ST. NO. 711

ST. NO. 709

ST. NO. 716

ST. NO. 711

ST. NO. 709

ST. NO. 716

ST. NO. 711

ST. NO. 709

ST.

City Land Company

15,300

ST. NO. 716

ST. NO. 712

ST. NO. 711

ST. NO. 709

ST. NO. 716

ST. NO. 711

ST. NO. 709

ST. NO. 716

ST. NO. 711

ST. NO. 709

ST.

RAIL ROAD

NEW ENGLAND