

Part of  
WARD 2  
**EAST BOSTON**  
Scale 50 feet to the Inch.

**GUNARD STEAMSHIP CO.**

*Cunard Steamship Co.'s Jas. W. Gerand & Hrs. F. G. Shaw's*  
227.500

B  
O  
S  
T  
O  
N  
  
R  
A  
I  
L  
R  
O  
A  
D

(2)

CLYDE

8<sup>in.</sup> ST.

OFFICE

ENGINE HO.

Sec. 1 Blk. 1

ST.

ST.

ST.

ST.

ST.

ST.

ST.

ST.

ST.

ST.

ST.

12<sup>in.</sup>

12<sup>in.</sup>

12<sup>in.</sup>

12<sup>in.</sup>

12<sup>in.</sup>

12<sup>in.</sup>

12<sup>in.</sup>

R  
A  
I  
L  
R  
O  
A  
D

N  
O  
Y  
A  
L  
B  
A  
N  
Y

A  
N  
D  
F  
R  
E  
I  
G  
H  
T

B  
O  
S  
T  
O  
N  
F  
R  
E  
I  
G  
H  
T

No. 11

No. 7

No. 5

No. 4

No. 8

No. 10

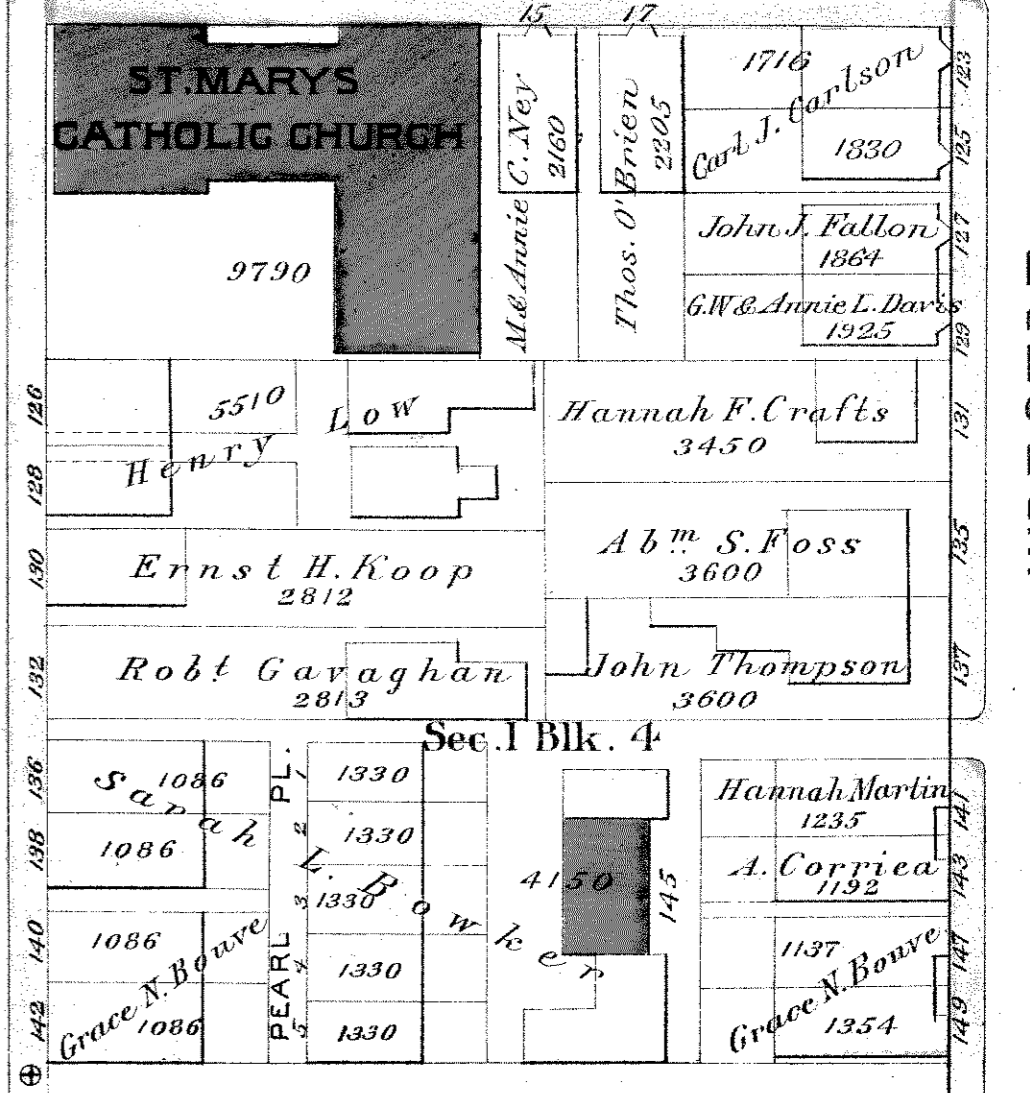
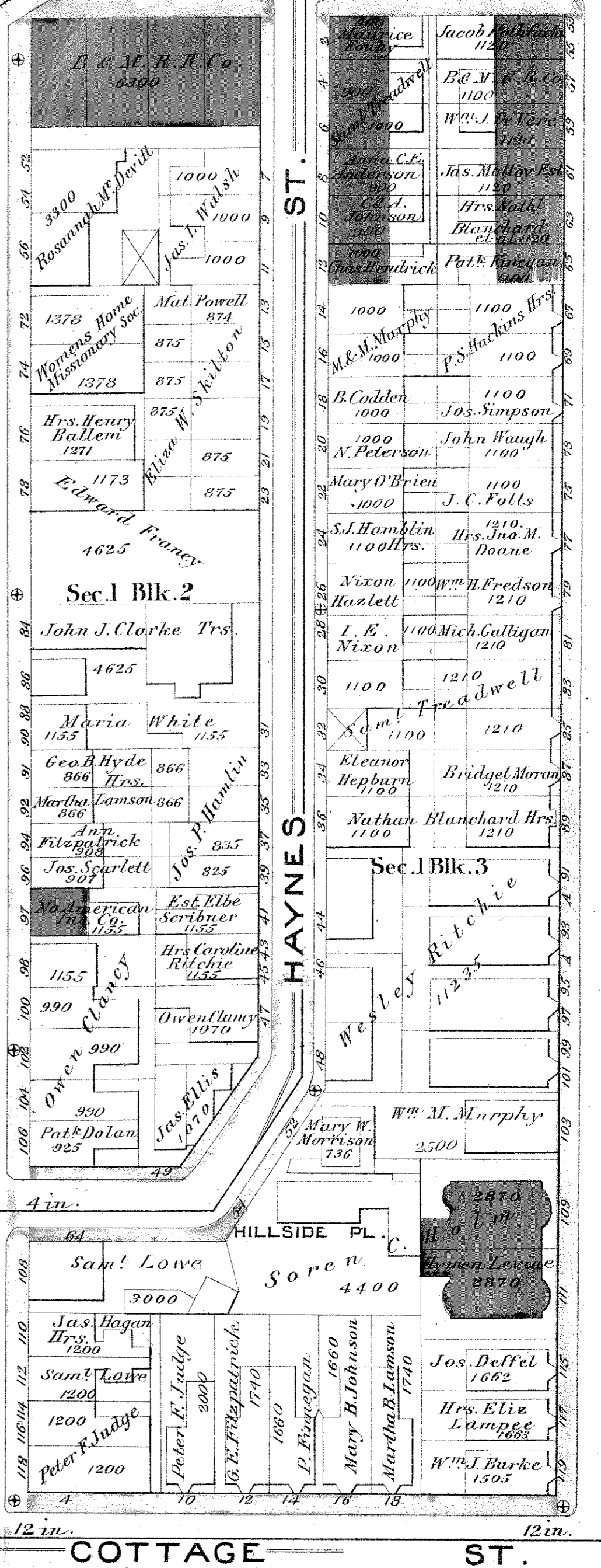
No. 7

No. 11

(4)

ORLEANS

ST.



(7)

WEBSTER

ST.

ST.

ST.

ST.

ST.

ST.

ST.