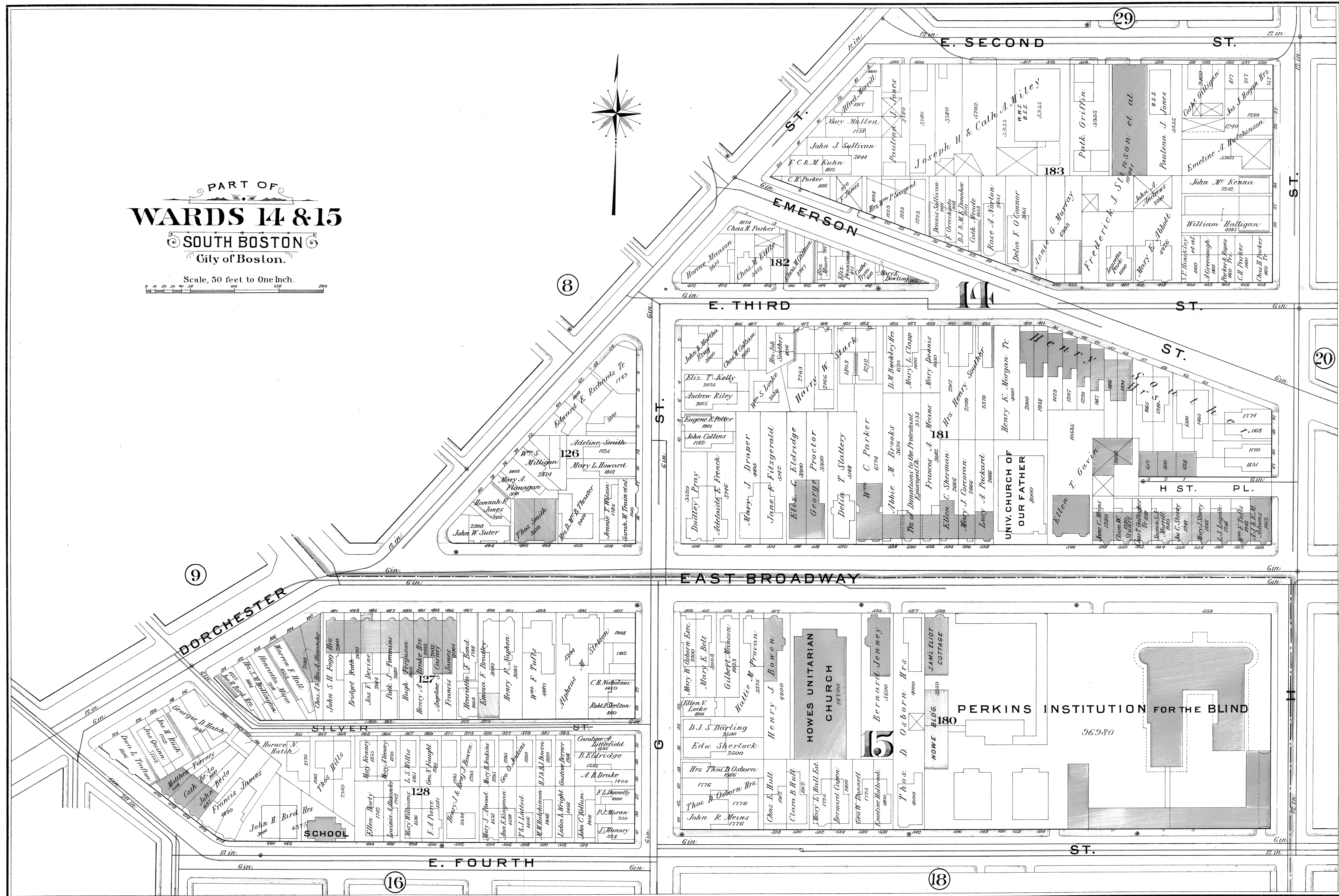


PART OF
WARDS 14 & 15
SOUTH BOSTON
City of Boston.

Scale, 50 feet to One Inch.



126
Adeline Smith
1125
Mary L. Howard
1813

127
Francis James
1854

128
Ellen Beady
1762

181
UNIV. CHURCH OF
OUR FATHER
8000

HOWES UNITARIAN
CHURCH
1700

PERKINS INSTITUTION FOR THE BLIND

18

8

9

ST.

G

29

20

16