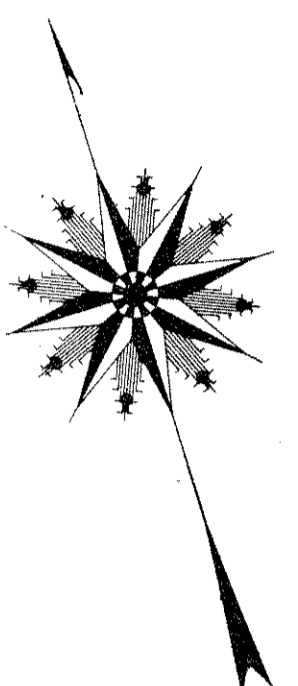
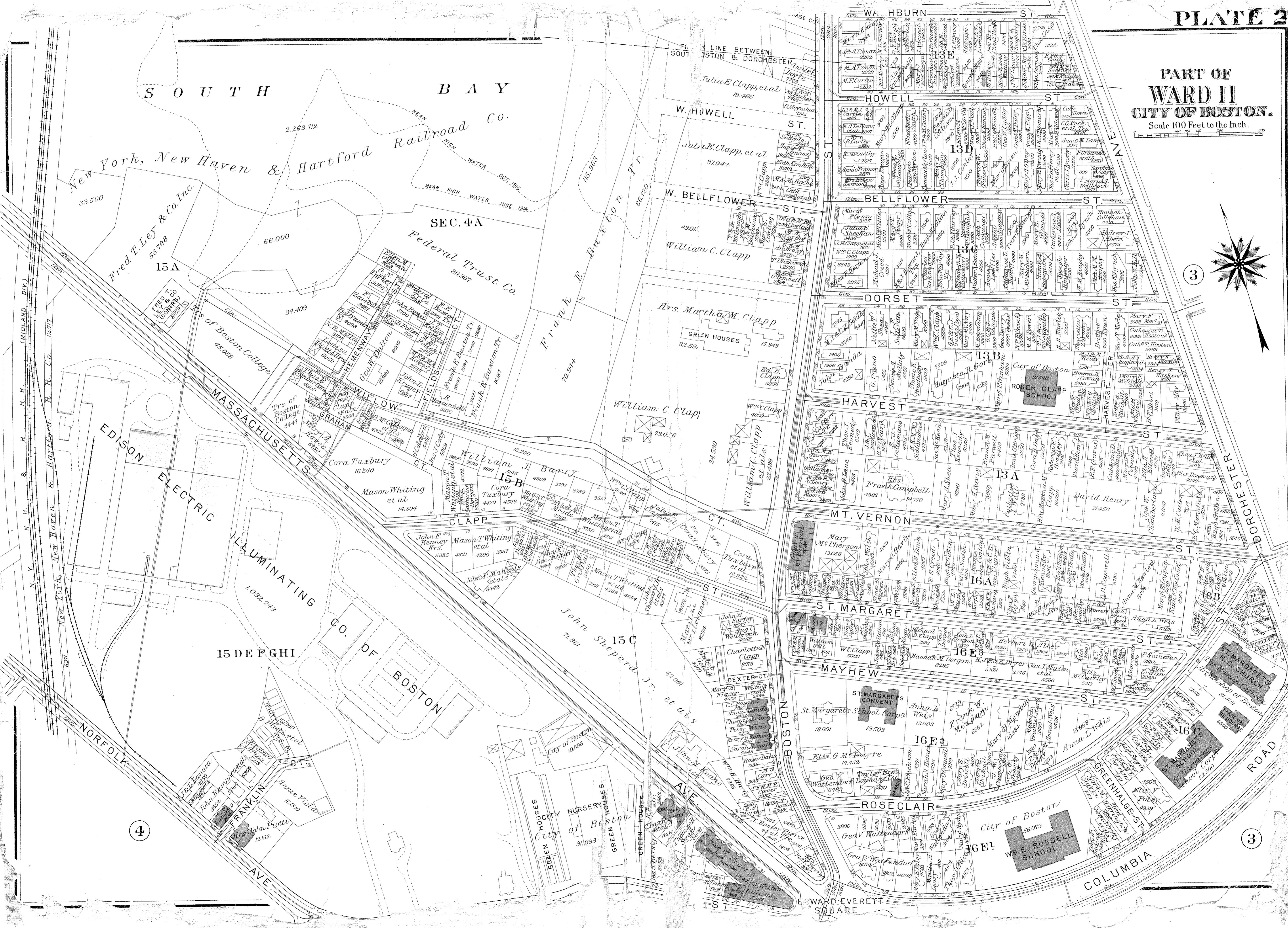


PART OF WARD 11 CITY OF BOSTON. Scale 100 Feet to the Inch.



3

4

3

Map contains numerous text labels for streets (e.g., HOWELL ST., BELLFLOWER ST., DORSET ST., HARVEST ST., MT. VERNON ST., ST. MARGARET ST., MAYHEW ST., ROSECLAIR ST., COLUMBIA ST., EDWARD EVERETT SQUARE), property owners (e.g., Julia E. Clapp, et al., William C. Clapp, Hrs. Martha M. Clapp), and institutions (e.g., ROBER CLAPP SCHOOL, ST. MARGARET'S SCHOOL CORP., ST. MARGARET'S CONVENT, W. E. RUSSELL SCHOOL). It also includes geographical features like 'SOUTH BAY' and 'New York, New Haven & Hartford Railroad Co.' and various lot numbers and area measurements.