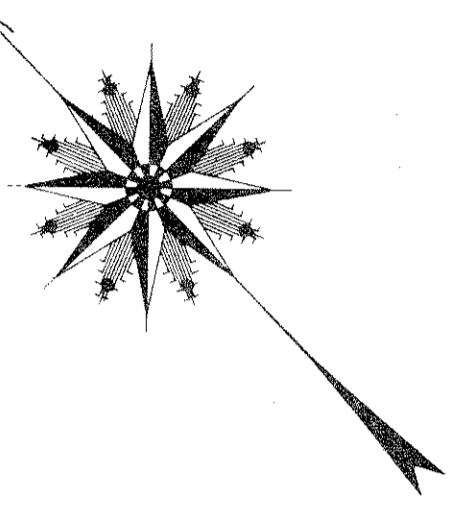


PART OF WARDS 1 & 2 CITY OF BOSTON.

Scale 100 feet to the inch



26

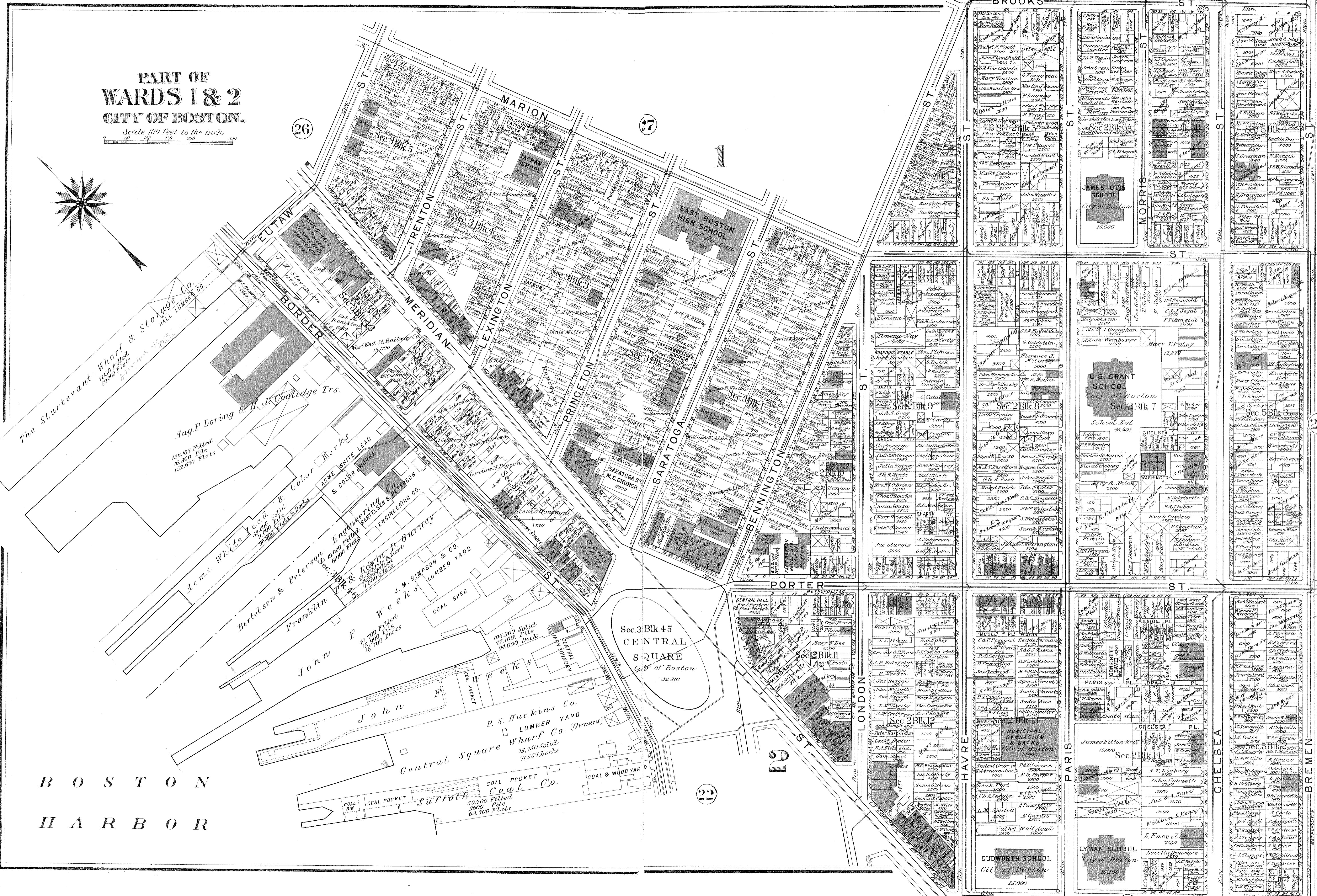
27

27

23

22

21



BOSTON HARBOR

GUDWORTH SCHOOL City of Boston 25,000

LYMAN SCHOOL City of Boston 26,200

U.S. GRANT SCHOOL City of Boston Sec. 2 Blk. 7 School Est. 18,925

EAST BOSTON HIGH SCHOOL City of Boston 27,500

Sec. 3 Blk. 45 CENTRAL SQUARE City of Boston 32,310

P.S. HUCKINS CO. LUMBER YARD (Owners) Central Square Wharf Co. 73,750 Solid 7,557 Docks

Suffolk Coal Co. 30,100 Filled 3,000 Pile 63,700 Flats

John F. Weeks 74,700 Filled 15,500 Pile 16,700 Docks

Aug P. Loring & H. J. Coolidge Trs. 136,883 Filled 16,300 Pile 152,670 Flats

The Startevant Wharf & Storage Co. 24,500 Filled 2,400 Pile 3,000 Flats