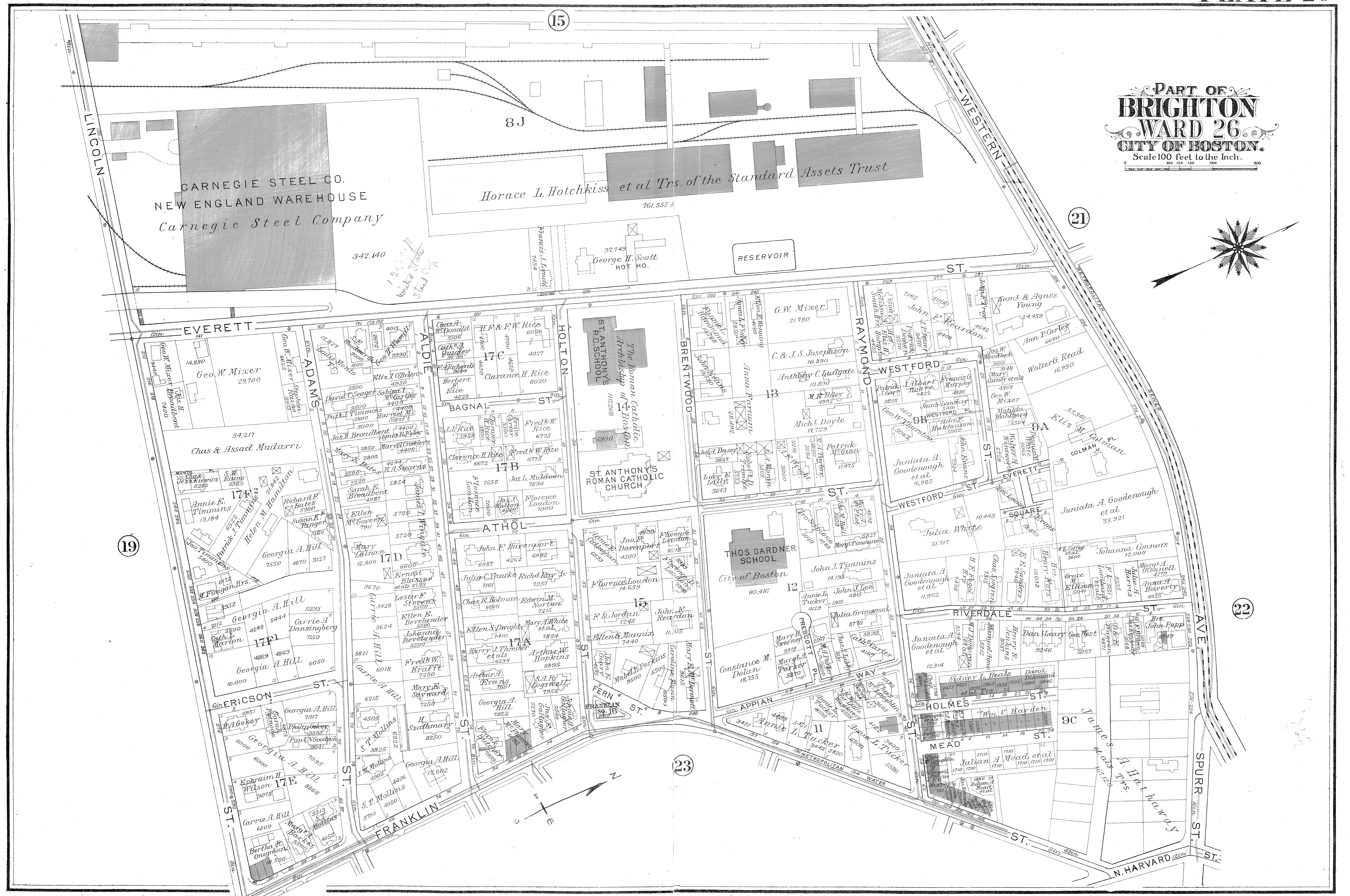
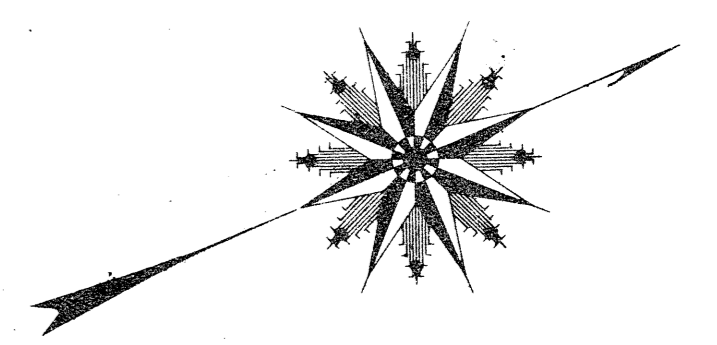


PART OF BRIGHTON WARD 26. CITY OF BOSTON. Scale 100 feet to the Inch.



CARNEGIE STEEL CO.  
NEW ENGLAND WAREHOUSE  
Carnegie Steel Company

Horace L. Hotchkiss et al Trs. of the Standard Assets Trust

ST ANTHONY'S  
The Roman Catholic  
Archdiocese of Boston  
ST ANTHONY'S  
ROMAN CATHOLIC  
CHURCH

THOS GARDNER  
SCHOOL  
City of Boston

19

23

22

15

21