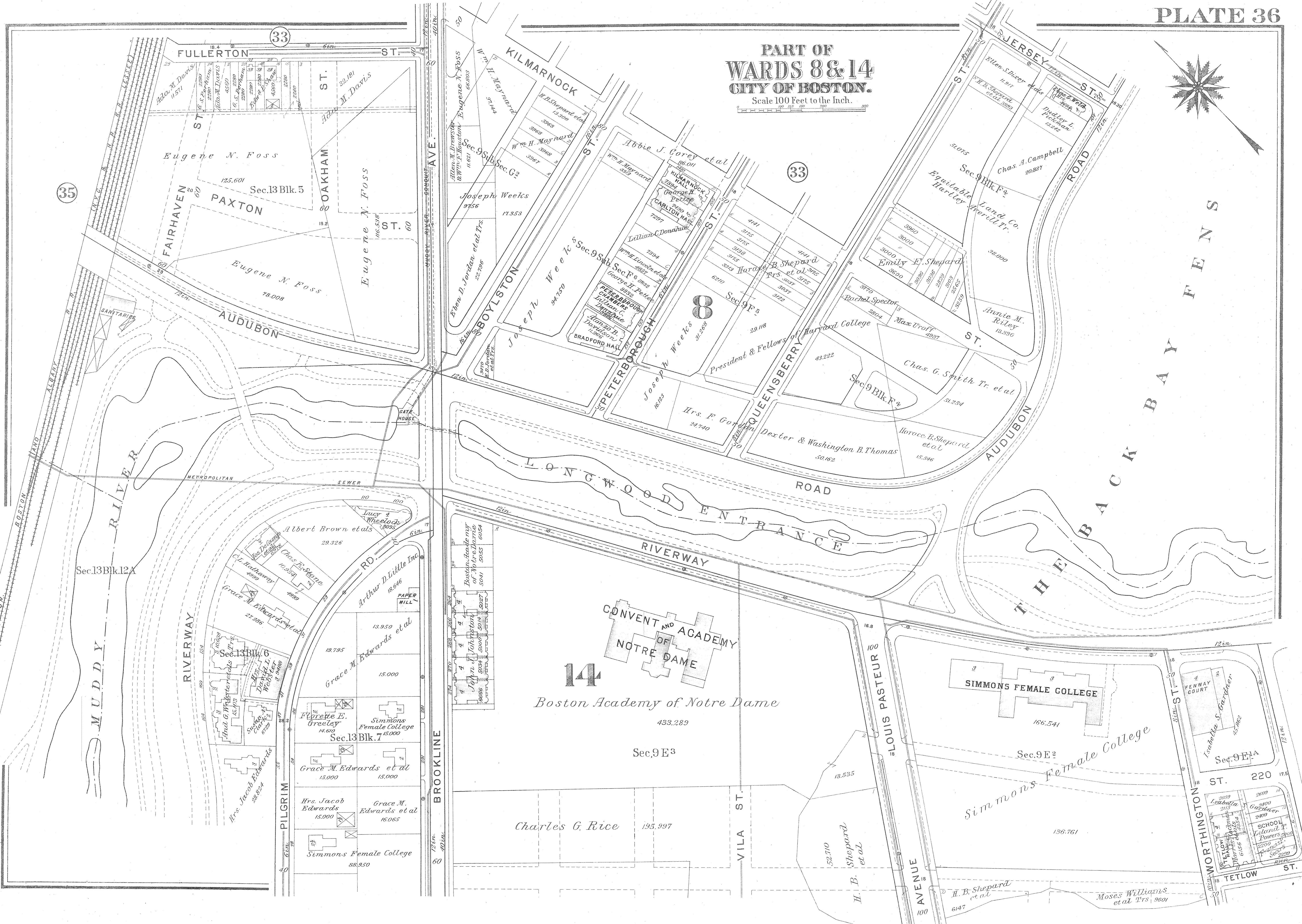
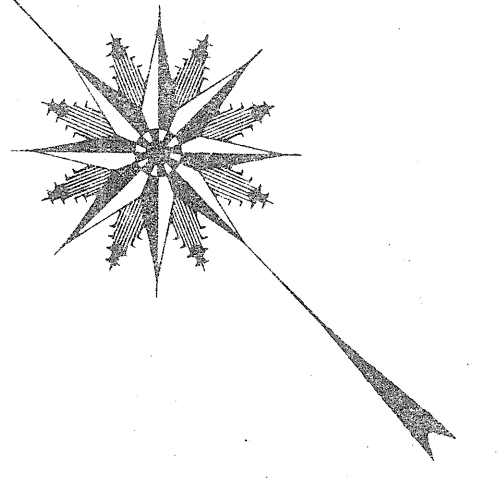


PART OF
WARDS 8 & 14
CITY OF BOSTON.
Scale 100 Feet to the Inch.



FULLERTON ST.

33

Eugene N. Foss

Sec. 13 Blk. 5

FAIRHAVEN ST.

PAXTON ST.

OAKHAM ST.

Eugene N. Foss

125.601

78.008

AUDUBON ST.

125.601

178.008

125.601

178.008

125.601

178.008

125.601

178.008

125.601

178.008

125.601

178.008

125.601

178.008

125.601

178.008

125.601

178.008

125.601

178.008

125.601

178.008

125.601

178.008

125.601

178.008

125.601

178.008

125.601

178.008

KILMARNOCK ST.

13.300

3068

3067

3066

3065

3064

3063

3062

3061

3060

3059

3058

3057

3056

3055

3054

3053

3052

3051

3050

3049

3048

3047

3046

3045

3044

3043

3042

3041

3040

3039

3038

3037

3036

3035

3034

3033

3032

3031

3030

3029

3028

3027

3026

BOYLSTON ST.

17.353

9756

9755

9754

9753

9752

9751

9750

9749

9748

9747

9746

9745

9744

9743

9742

9741

9740

9739

9738

9737

9736

9735

9734

9733

9732

9731

9730

9729

9728

9727

9726

9725

9724

9723

9722

9721

9720

9719

9718

9717

9716

9715

9714

PETERBOROUGH ST.

29.118

3175

3174

3173

3172

3171

3170

3169

3168

3167

3166

3165

3164

3163

3162

3161

3160

3159

3158

3157

3156

3155

3154

3153

3152

3151

3150

3149

3148

3147

3146

3145

3144

3143

3142

3141

3140

3139

3138

3137

3136

3135

3134

3133

QUEENSBERRY ST.

43.222

3370

3369

3368

3367

3366

3365

3364

3363

3362

3361

3360

3359

3358

3357

3356

3355

3354

3353

3352

3351

3350

3349

3348

3347

3346

3345

3344

3343

3342

3341

3340

3339

3338

3337

3336

3335

3334

3333

3332

3331

3330

3329

3328

JERSEY ST.

51.075

3000

3001

3002

3003

3004

3005

3006

3007

3008

3009

3010

3011

3012

3013

3014

3015

3016

3017

3018

3019

3020

3021

3022

3023

3024

3025

3026

3027

3028

3029

3030

3031

3032

3033

3034

3035

3036

3037

3038

3039

3040

3041

3042

ST. JERSEY

11.017

11.018

11.019

11.020

11.021

11.022

11.023

11.024

11.025

11.026

11.027

11.028

11.029

11.030

11.031

11.032

11.033

11.034

11.035

11.036

11.037

11.038

11.039

11.040

11.041

11.042

11.043

11.044

11.045

11.046

11.047

11.048

11.049

11.050

11.051

11.052

11.053

11.054

11.055

11.056

11.057

11.058

11.059

11.060

14
CONVENT AND ACADEMY
OF
NOTRE DAME
Boston Academy of Notre Dame
433.283
Sec. 9 E 3

SIMMONS FEMALE COLLEGE
166.541
Sec