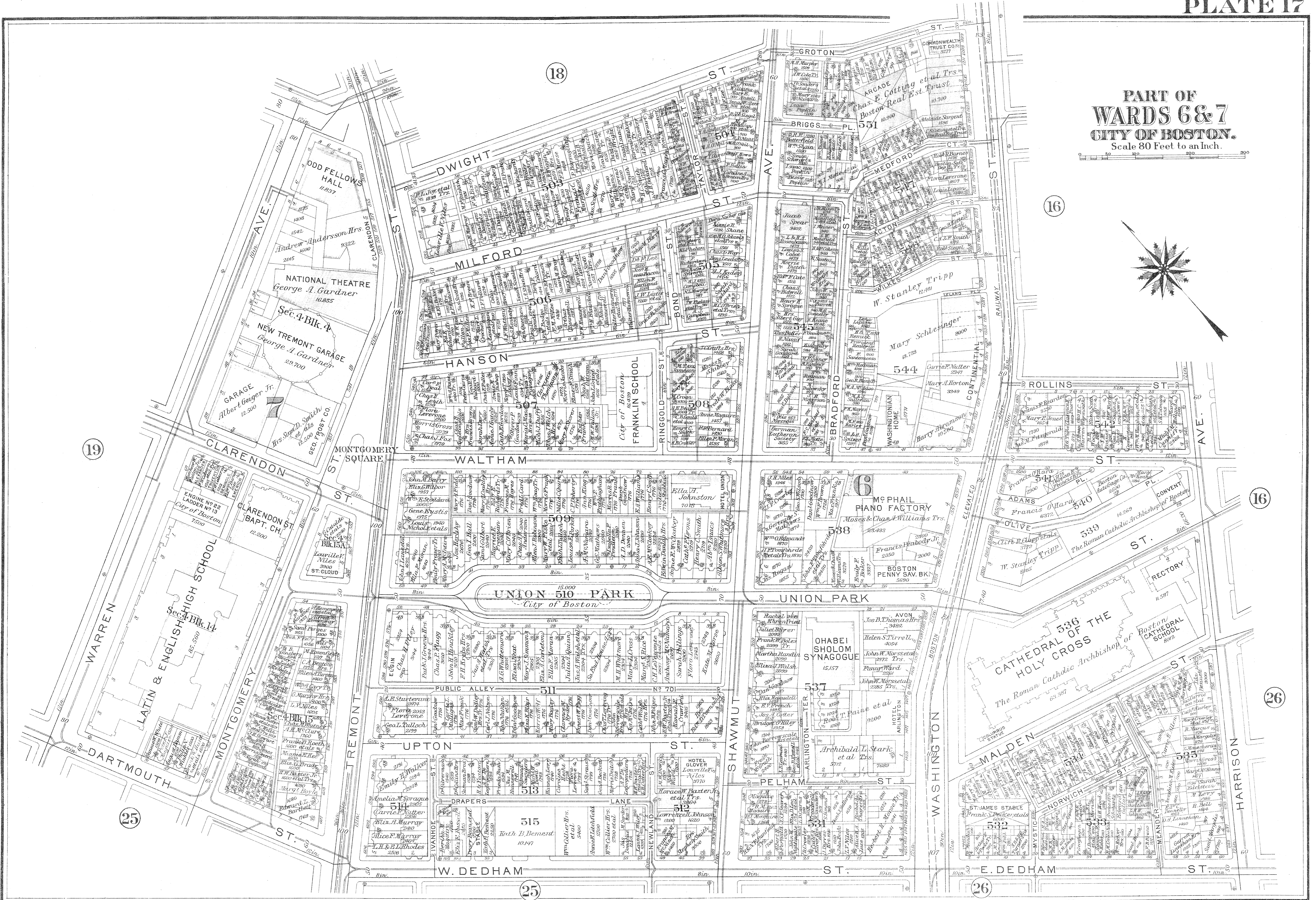
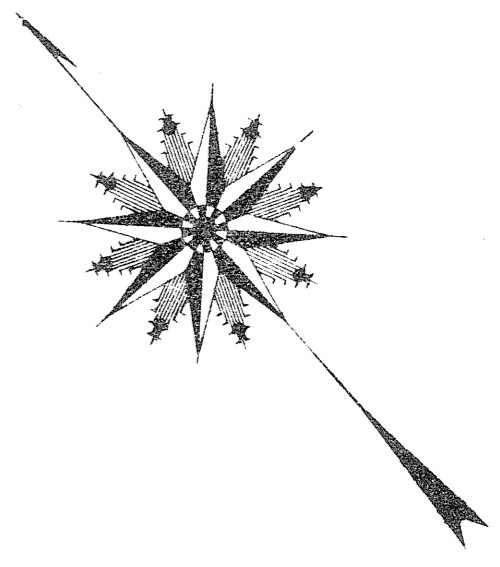
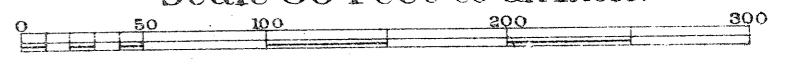


PART OF
WARDS 6 & 7
CITY OF BOSTON.
Scale 80 Feet to an Inch.



18

16

16

26

19

25

25

26

ODD FELLOWS HALL
George A. Gardner
11837
NEW TREMONT GARAGE
George A. Gardner
29700
GARAGE
Albert Geiger Jr.
12500

DWIGHT ST.
MILFORD ST.
HANSON ST.
WALTHAM ST.
FRANKLIN SCHOOL
CITY OF BOSTON

BRADFORD ST.
W. STANLEY TRIPP
MARY SCHLESINGER
544
WASHINGTON HOME
HARRY ABRAHAMSON
10500

CLARENDON ST.
BAPT. CH.
12200
LATIN & ENGLISH SCHOOL
Sec. 4 Blk. 14
185,500

UNION 510 PARK
CITY OF BOSTON
500
508
506
504
502
501

McPHAIL PIANO FACTORY
Moses & Chas. Williams Trs.
538
BOSTON PENNY SAV. BK.
2920
537

ADAMS ST.
540
539
RECTORY
14,269
CATHEDRAL OF THE HOLY CROSS
The Roman Catholic Archbishop of Boston
536
BOSTON CATHEDRAL SCHOOL
8092

WARREN ST.
MONTGOMERY ST.
TREMONT ST.
DARTMOUTH ST.
514
513
512
511
510

UPTON ST.
DRAPERS LANE
W. DEDHAM ST.
515
514
513
512
511
510

SHAWMUT ST.
OHABEI SHOLOM SYNAGOGUE
15,157
537
536
535
534
533
532
531

MALDEN ST.
HARRISON ST.
E. DEDHAM ST.
536
535
534
533
532
531