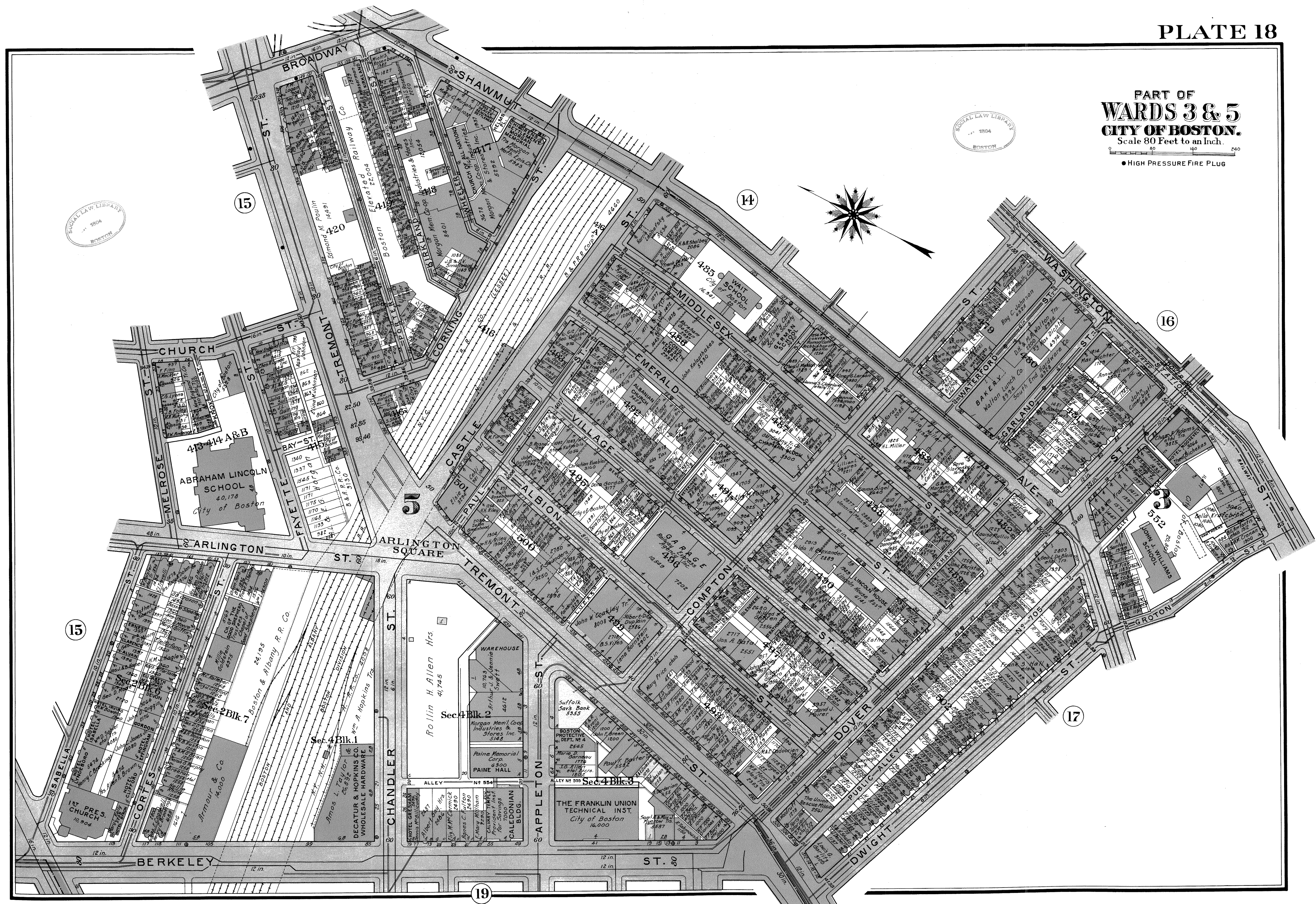
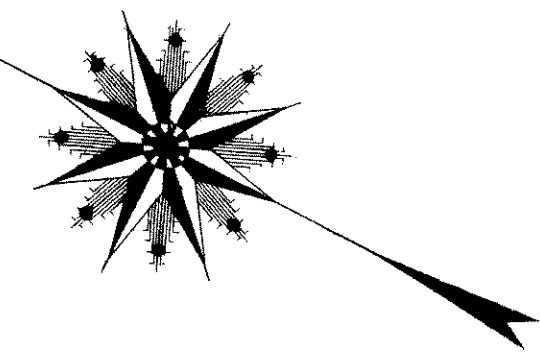
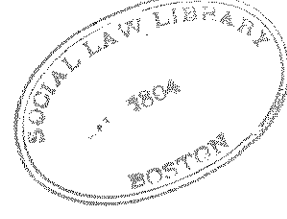
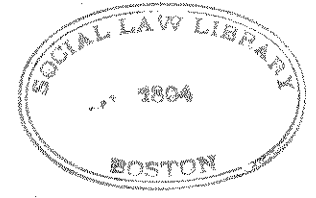


PART OF
WARDS 3 & 5
CITY OF BOSTON.

Scale 80 Feet to an Inch.

● HIGH PRESSURE FIRE PLUG



15

14

16

15

17

19

CHURCH ST.

ARLINGTON ST.

BERKELEY ST.

FAVETTE ST.

BAY ST.

CHANDLER ST.

CORNING ST.

CASTLE ST.

APPLETON ST.

ALBION ST.

VILLAGE ST.

TREMONT ST.

MIDDLESEX ST.

EMERALD ST.

COMPTON ST.

WASHINGTON ST.

DOVER ST.

DWIGHT ST.

WATERFORD ST.

CARLAND ST.

GROTON ST.

BAKER ST.

WASHINGTON ST.

WASHINGTON ST.

ABRAHAM LINCOLN SCHOOL

ALBION VILLAGE

THE FRANKLIN UNION TECHNICAL INST.

JOHN J. WILLIAMS SCHOOL

ARMOUR & CO

WAREHOUSE

Suffolk Sav's Bank

1ST PRES CHURCH

PAINE MEMORIAL CORP.

THE UNION RESERVE TRUST

413-414 A & B

485 WAIT SCHOOL

552 JOHN J. WILLIAMS SCHOOL

Sec. 2 Blk. 7

Sec. 4 Blk. 2

Sec. 4 Blk. 3

Sec. 4 Blk. 1

Sec. 4 Blk. 1

Sec. 4 Blk. 1

DECATUR & HOPKINS CO.

CALEDONIAN BLDG.

THE UNION RESERVE TRUST

ARMOUR & CO

PAINE MEMORIAL CORP.

THE UNION RESERVE TRUST

ARMOUR & CO

PAINE MEMORIAL CORP.

THE UNION RESERVE TRUST