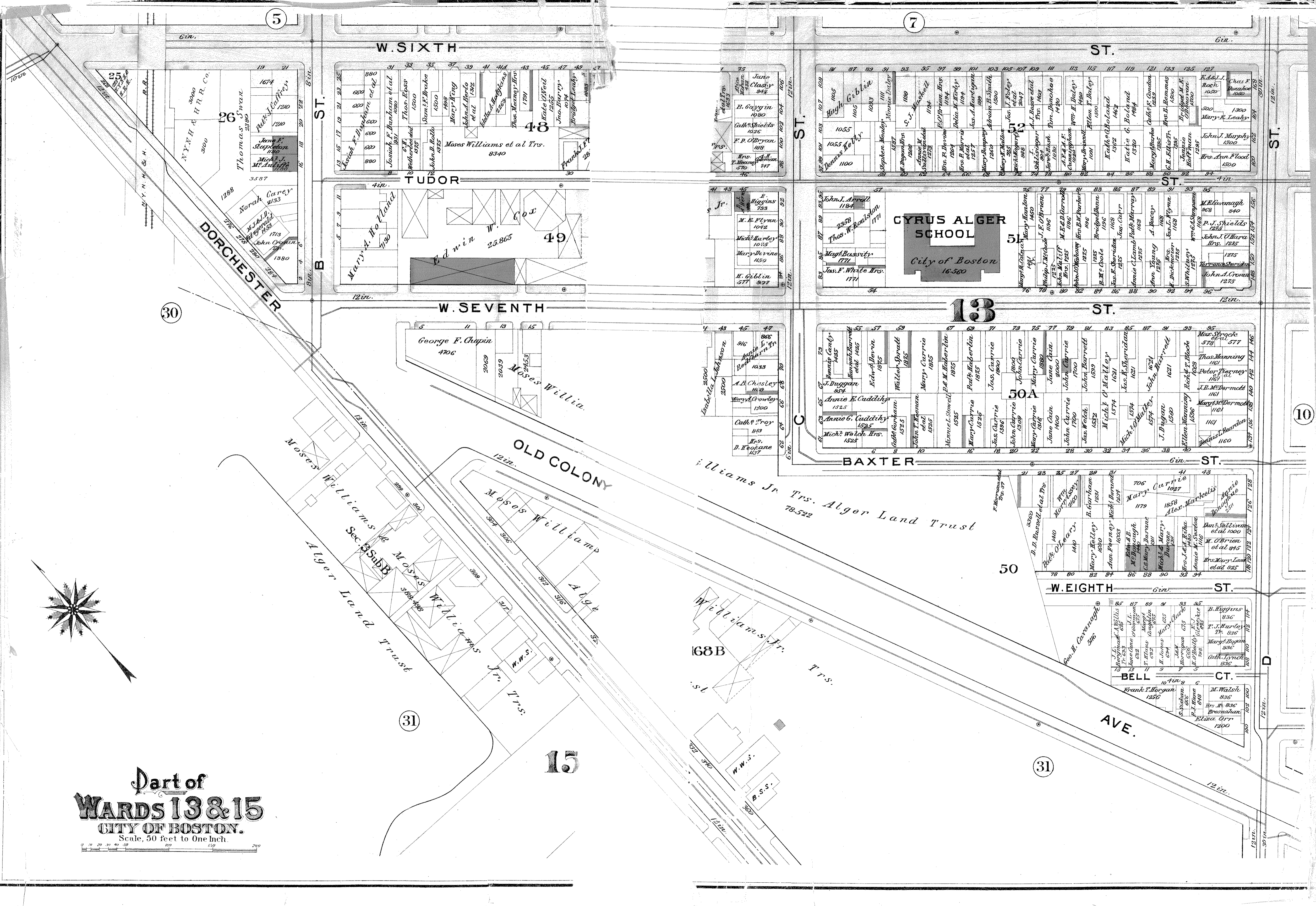
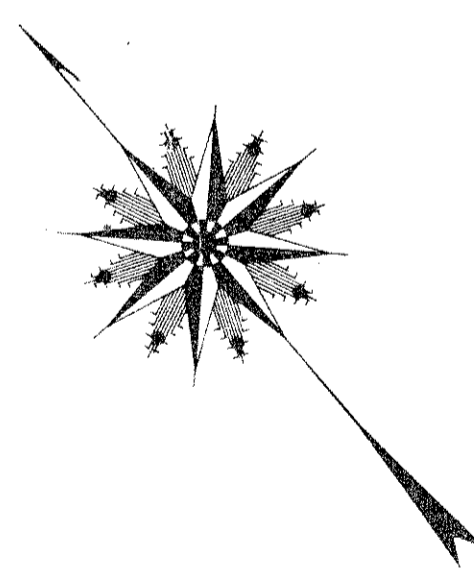
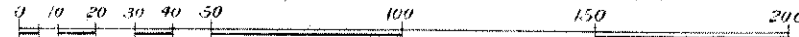


Dart of
WARDS 13 & 15
CITY OF BOSTON.

Scale, 50 feet to One Inch.



W. SIXTH ST.

ST.

TUDOR

W. SEVENTH ST.

CYRUS ALGER SCHOOL
City of Boston
16-560

13 ST.

BAXTER ST.

W. EIGHTH ST.

BELL CT.

AVE.

5

7

30

10

31

31

15

DORCHESTER

B

ST.

ST.

B

ST.

ST.

C

D

B

C

D

B

C

D

B

C

D

B

C

D

B

C

D

B

C

D

B

C

D

B

C

D

B

C

D

B

C

D

B

C

D

B

C

D

B

C

D

B

C

D

B

C

D

B

C

D

B

C

D

B

C

D