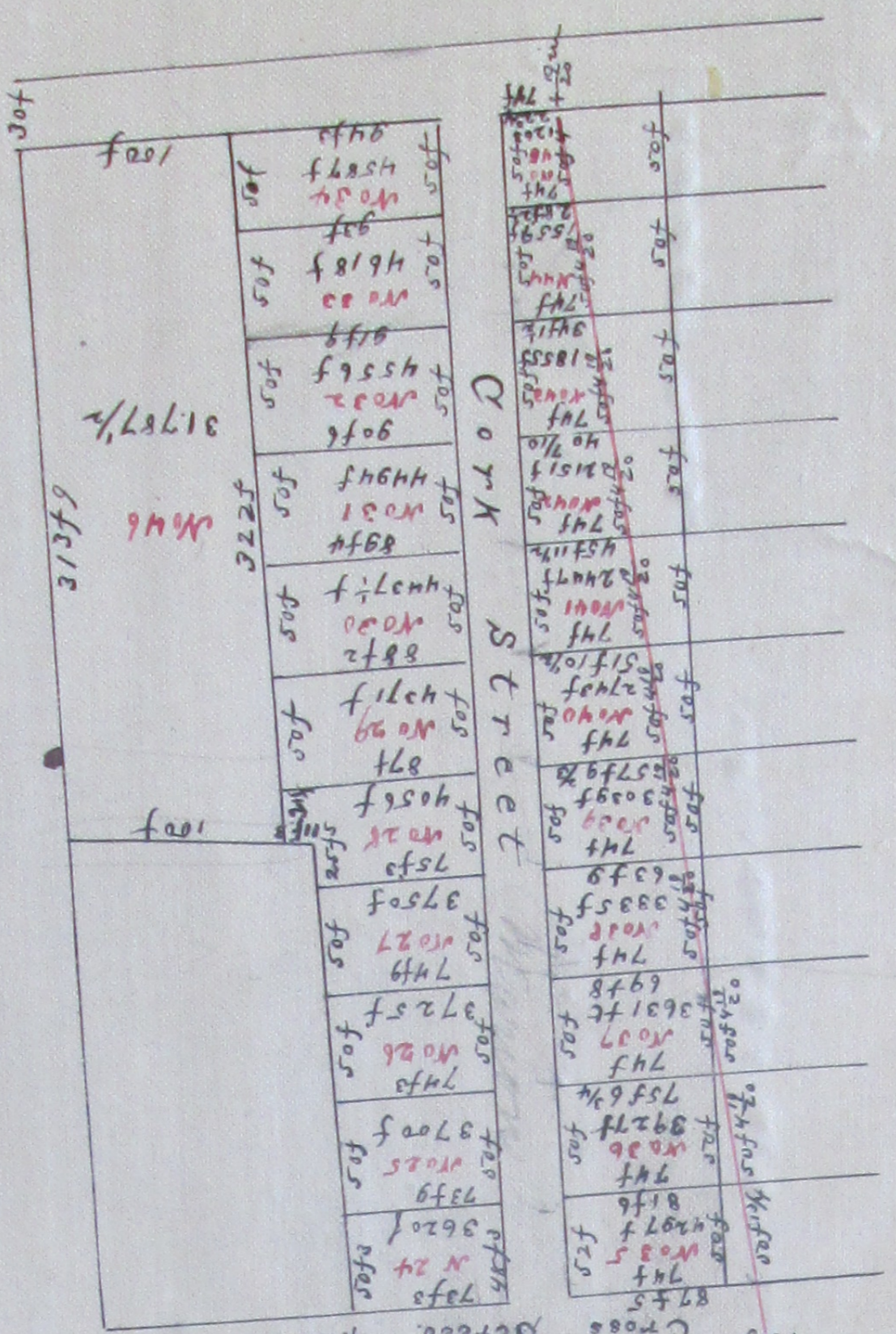


Copy furnished by County Engineer.

Compared and corrected.

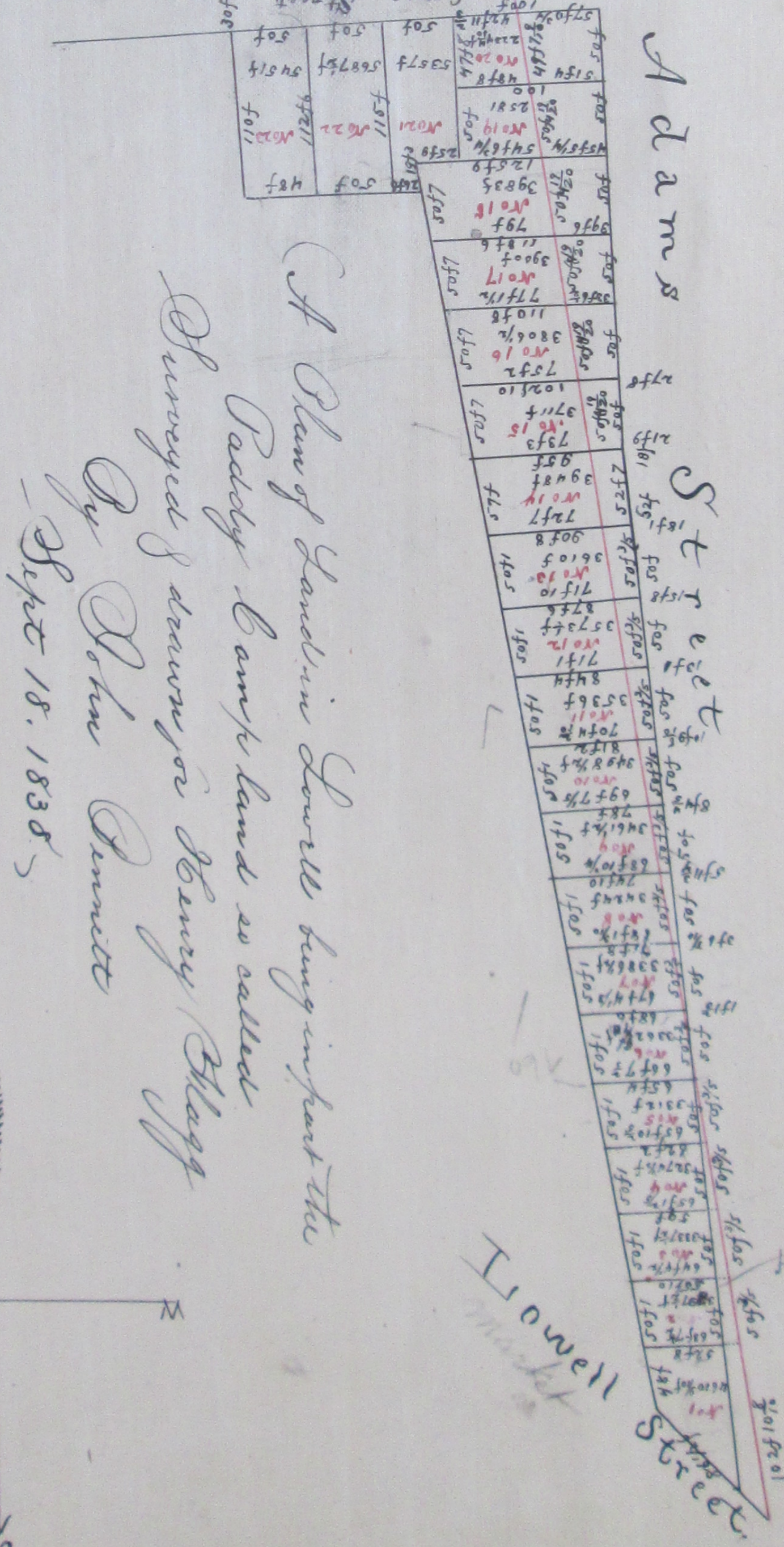
Attest - C. M. Thompson,

Deputy



Claims

Street



Attest J. P. Kelly 20 1839.

Record & Recorded by
 J. P. Kelly Regt

A Plan of Land in Lowell being in part the
 Property of said land as called
 Surveyed & drawn for Henry Blag
 by John Bennett
 Sept 18. 1838

