

LOCATION EAST STREET

SPRINGFIELD

1.

REMARKS	BOOK	PAGE	DATE	NAME
South St. Old Bay Rd.	Plans " 2	45	1903	Edw. F. Healy & c
South Street	" 2	79	1905	Edw. Healey
South St. Old Bay Rd.	" E	70	1916	Jas. M. Healy
Healey Estates (D.O.)	" U	18	1924	" " "
Lindbergh Plat ^{T. 6}	" Z	40	1927	Belmont Realty/ Co.
Prentice St. Assessment	" 11	85	1931	City of Spd.

LOCATION EAST STREET

SPRINGFIELD^{2.}

REMARKS	BOOK	PAGE	DATE	NAME
Bowles Park	Plans " 17	12	1938	-----
Prentice St. Acceptance From Page Blvd. to Bowles Park	" 18	30	1939	City of Spd.
Prentice St. Assessment From Page Blvd. to Bowles Park	" 18	31	"	" " "
Bowles Park Acceptance Northerly	" 20	62	1941	" " "
Bowles Park Assessment Northerly	" 20	63	"	" " "
Bowles Park Acceptance to Edendale St.	" 20	72	"	" " "

LOCATION EAST STREET

SPRINGFIELD

3.

REMARKS	BOOK	PAGE	DATE	NAME	
Bowles Park Assessment to Edendale St.	Plans	" 20	73	1941	City of Spd.
Prentice St. Acceptance Page Blvd. to Chicopee Line	" 22	68 & 69	1944	" " "	
Prentice St. Assessment Page Blvd. to Chicopee Line	" 22	70	"	" " "	
Bessemer St. &c	" 23	73	1945	Cyril Gagne Confirmation Plan filed by Land Registration	
Bowles Park &c	" 23	98	"	Cyril Gagne Confirmation Plan filed by Land Registration	
Bessemer Street	" 23	124	1946	Cyril Gagne	

LOCATION EAST STREET

SPRINGFIELD 4.

REMARKS	BOOK	PAGE	DATE	NAME
Prentice St. Acceptance Page Blvd. to Chicopee Line	Plans 24	62 & 63	1946	City of Spd.
Bowles Park Acceptance	" 24	94 & 95	"	" " "
Bowles Park Assessment	" 24	96	"	" " "
Bowles Park Assessment	" 24	97	"	" " "
Roosevelt Ave. Acceptance to Page Blvd.	" 26	47 & 48	1947	" " "
Bowles Park Acceptance	" 27	34 & 35	1948	" " "

LOCATION EAST STREET

SPRINGFIELD

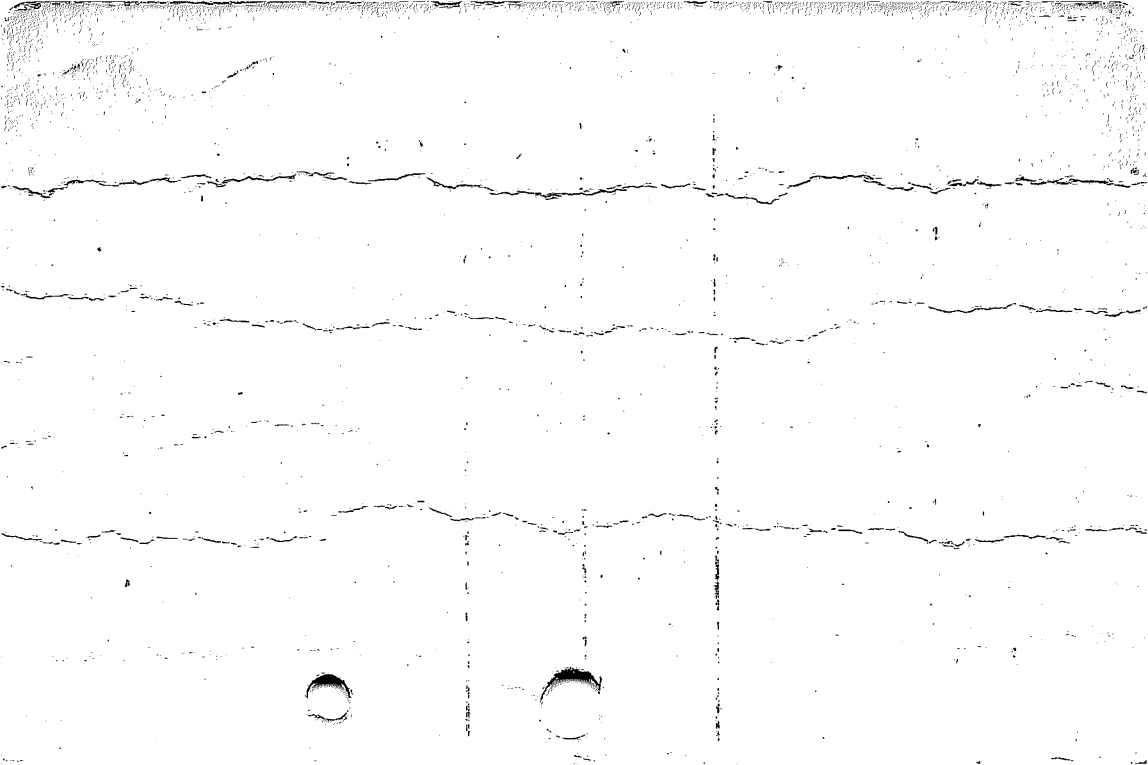
5

REMARKS	BOOK	PAGE	DATE	NAME
Bowles Park Assessment	Plans 27	36 & 37	1948	City of Spd.
Beaufort Circle Acceptance	" 32	12	1950	" " "
Beaufort Circle Assessment	" 32	13	"	" " "
Bessemer St. Acceptance	" 32	14	"	" " "
Bessemer St. Assessment	" 32	15	"	" " "
Rathbun Street Acceptance	" 42	97	1954	" " "

LOCATION EAST STREET

SPRINGFIELD ⁶

REMARKS	BOOK	PAGE	DATE	NAME
Rathbun Street Assessment	Plans " 42	98	1954	City of Spd.
Bessemer Street Acceptance	" 61	81 & 82	1957	" " "
Beaufort Circle Acceptance	" 62	54 & 55	"	" " "
Bowles Park &c Woodstock St. East St. to 475 ft. Northerly	" 70 " 102	57 124 & 125	1959 1966	E. P. Moore City of Spd.
Woodstock Street Assessment	" 105	37	"	" " "



LOCATION EAST STREET

SPRINGFIELD

REMARKS	BOOK	PAGE	DATE	NAME
Price St. Assessment East Street to Anniversary St.	"119	53	1969	City of Spd.
Price St. Acceptance East Street to Anniversary St.	"119	54--57 inc.	1969	City of Spd.
Page Blvd. &c	"128	17--20 inc.	1971	Westinghouse Electric Corp.
See Book 3625 Page 349			"	---
Prentice Street	209	70	1983	Henry J Feeney &c

LOCATION EAST STREET

SPRINGFIELD

REMARKS	BOOK	PAGE	DATE	NAME
Price Street &c	218	101	1984	Joseph Lech
Prentice Street	"248	2	1987	Arnold P. Nardi &c
Price Street	269	74	1989	John M Diamond
Roosevelt Ave &*c	286	2	1993	Stephanie T bagge

LOCATION EAST STREET (I.O.)

Springfield

Changed to Moxon St.(I.O.)from Worcester St.to Nichols St.

REMARKS	BOOK	PAGE	DATE	NAME
See Order of City Council	March 5,		1928	On File